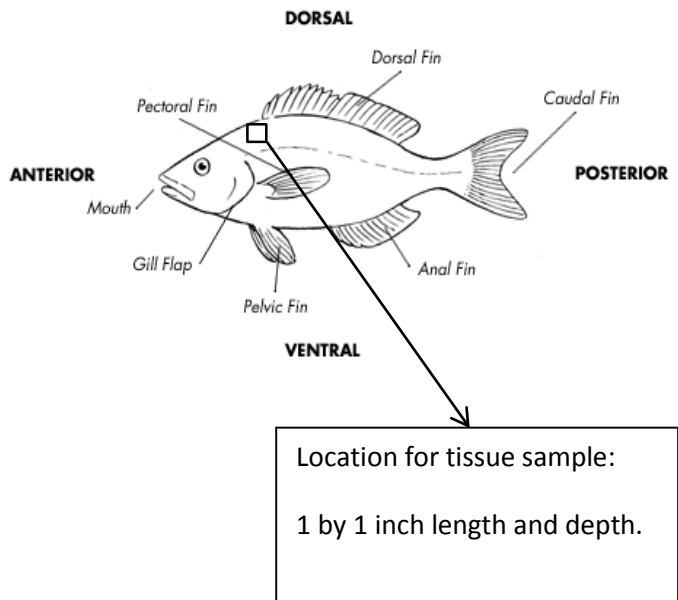


Common Name	Scientific Name	Common Name	Scientific Name
goldface tilefish	<i>Caulolatilus chrysops</i>	mutton snapper	<i>Lutjanus analis</i>
blackline tilefish	<i>Caulolatilus cyanops</i>	blackfin snapper	<i>Lutjanus buccanella</i>
anchor tilefish	<i>Caulolatilus intermedius</i>	red snapper	<i>Lutjanus campechanus</i>
blueline tilefish	<i>Caulolatilus microps</i>	cupera snapper	<i>Lutjanus cyanopterus</i>
tilefish	<i>Lopholatilus chamaeleonticeps</i>	dog snapper	<i>Lutjanus jocu</i>
rock hind	<i>Epinephelus adscensionis</i>	mahogany snapper	<i>Lutjanus mahogoni</i>
speckled hind	<i>Epinephelus drummondhayi</i>	silk snapper	<i>Lutjanus vivanus</i>
yellowedge grouper	<i>Epinephelus flavolimbatus</i>	yellowtail snapper	<i>Ocyurus chrysurus</i>
red hind	<i>Epinephelus guttatus</i>	dusky smooth-hound	<i>Mustelus canis</i>
red grouper	<i>Epinephelus morio</i>	narrowfin smooth-hound	<i>Mustelus norrisi</i>
misty grouper	<i>Epinephelus mystacinus</i>	little tunny	<i>Euthynnus alletteratus</i>
warsaw grouper	<i>Epinephelus nigritus</i>	blackfin tuna	<i>Thunnus atlanticus</i>
snowy grouper	<i>Epinephelus niveatus</i>	king mackerel	<i>Scomberomorus cavalla</i>
Nassau grouper	<i>Epinephelus striatus</i>	cero	<i>Scomberomorus regalis</i>
black grouper	<i>Mycteroperca bonaci</i>	greater amberjack	<i>Seriola dumerili</i>
yellowmouth grouper	<i>Mycteroperca interstitialis</i>	lesser amberjack	<i>Seriola fasciata</i>
gag grouper	<i>Mycteroperca microlepis</i>	almaco Jack	<i>Seriola rivoliana</i>
scamp	<i>Mycteroperca phenax</i>	banded rudderfish	<i>Seriola zonata</i>
yellowfin grouper	<i>Mycteroperca venenosa</i>	tripletail	<i>Lobotes surinamensis</i>
permit	<i>Trachinotus falcatus</i>	jackknife fish	<i>Equetus lanceolatus</i>

Location of tissue removal for isotope analysis.



How to measure the total length of a fish.

